



STUDENT TECHNOLOGY

GETTING STARTED GUIDE



9th-12th WINDOWS DEVICE LOGIN

1. **Turn on your device**

Press the Power Button on the top right of the keyboard until you see your device begin to light up.

2. If the student's name does not appear on the device, select **Other User** to begin logging into your device

3. Enter your Username and Password, then click the arrow
Username = Student ID#@ideastudent.org
Password = Unique password created by the student



STUDENT TECHNOLOGY

GETTING STARTED GUIDE



9th-12th WINDOWS DEVICE LOGIN

Students can reset their password directly from their device. Follow the steps listed below:

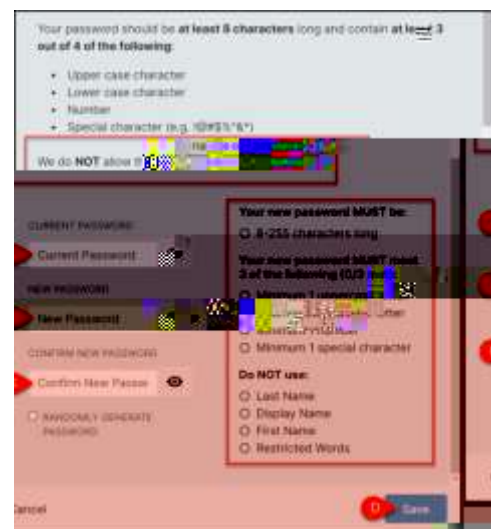
Navigate to: <https://portal.ideapublicschools.org/>

1. Click on **Need help**
2. Select **Forget Password**
3. Enter your username (STUDENTID#) and click on **Next**
4. Enter the appropriate response to your challenge questions.

(If this is your first time logging in, you will be prompted to set your challenge questions. Follow the on screen instructions to complete this process)

5. Enter your new password using the guidelines shown below

Type your new password
Enter your new password again
Click Next



Go to www.ideapublicschools.org/learningtech for more information and technical support.

Visite a www.ideapublicschools.org/learningtech para más información y apoyo técnico.